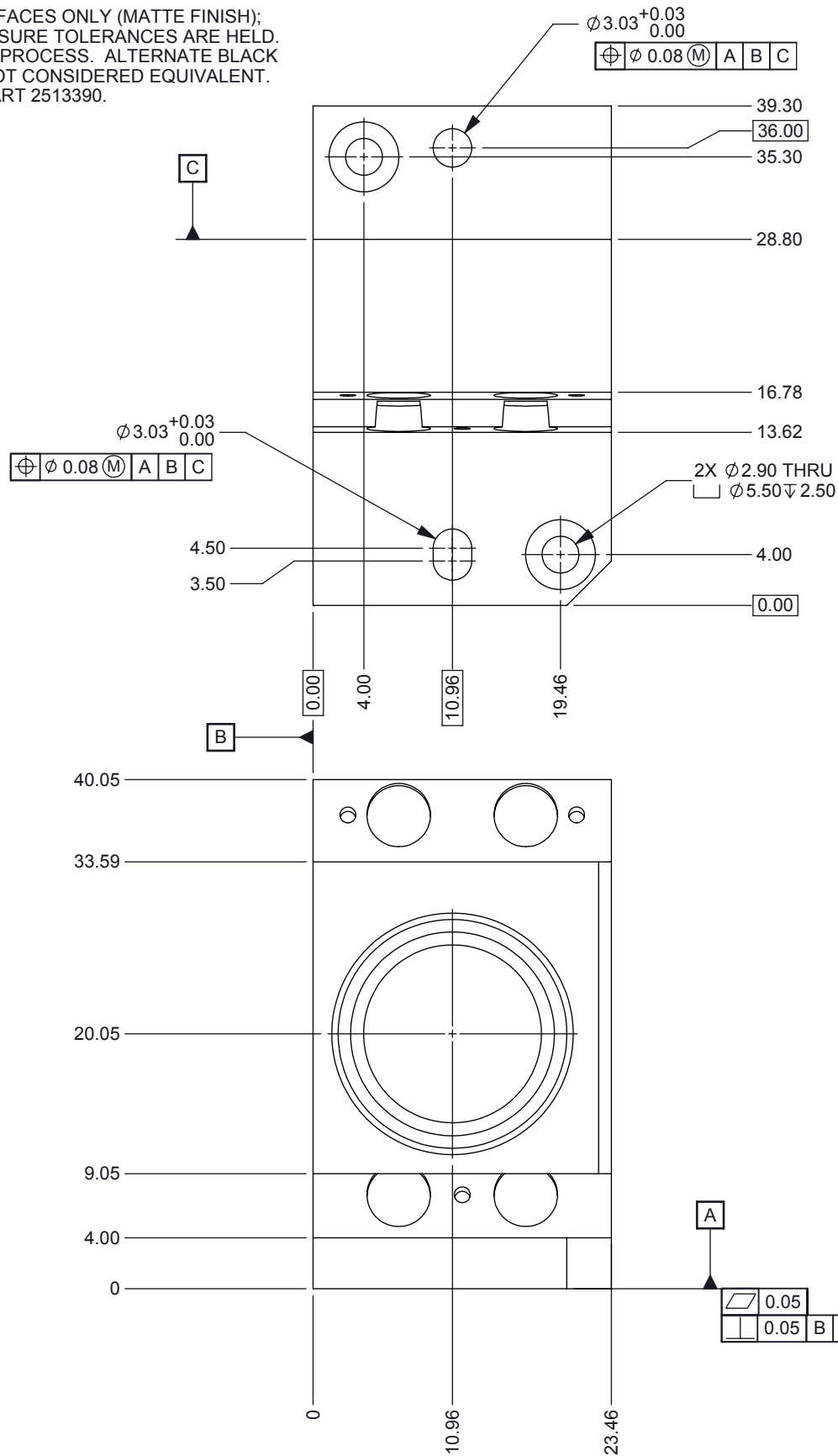


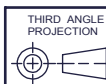
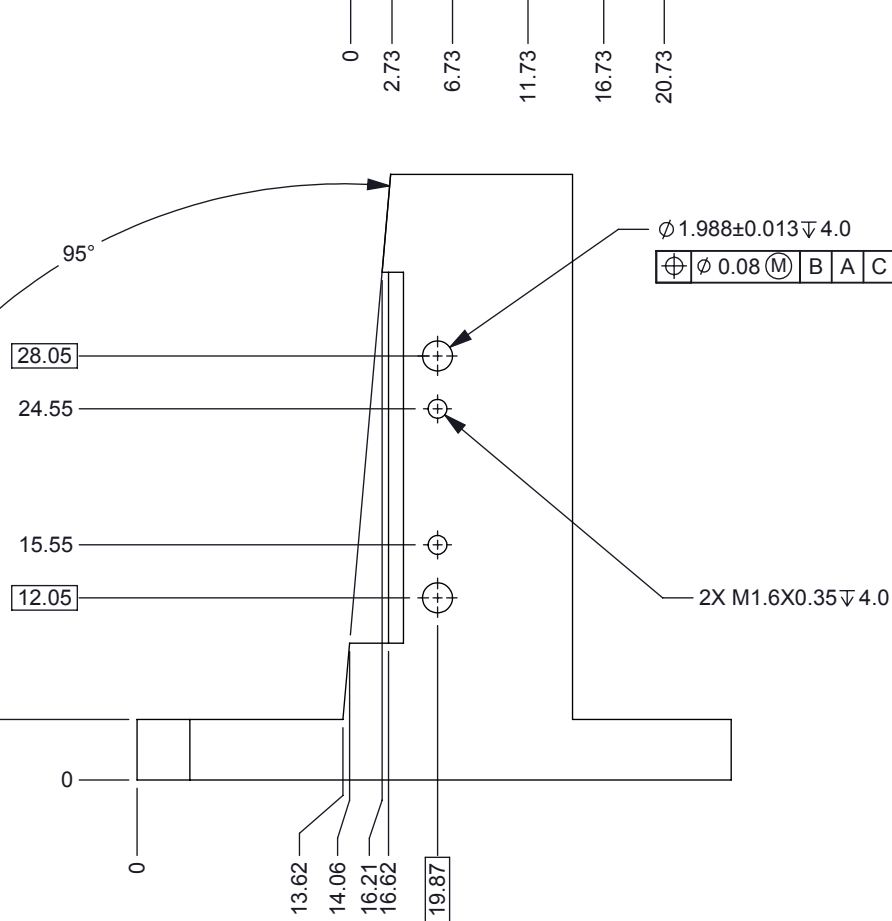
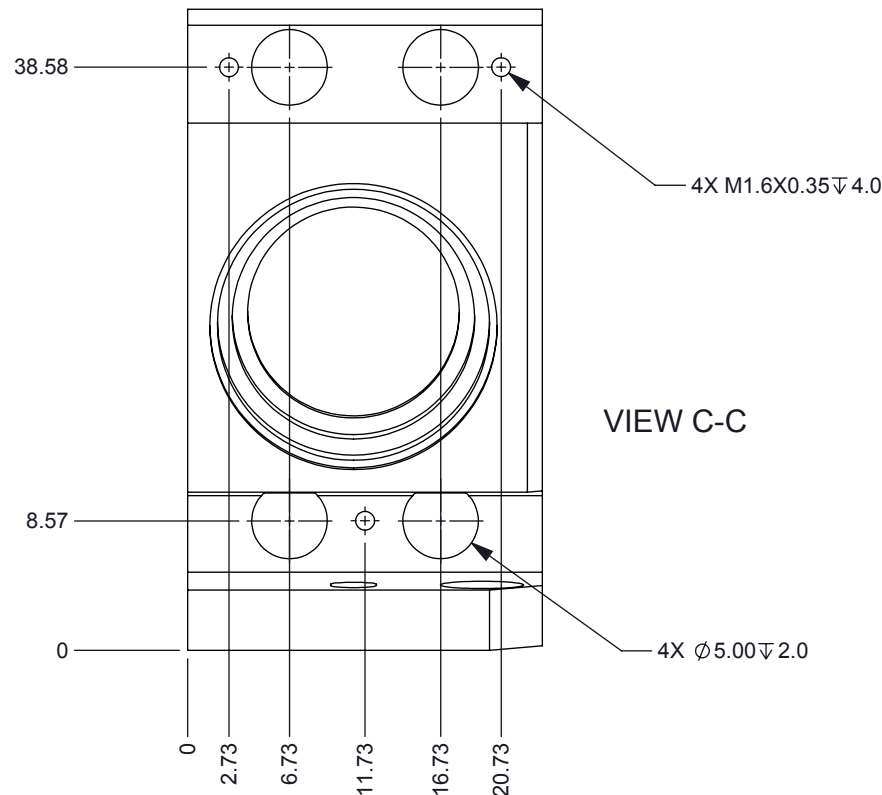
NOTES: UNLESS OTHERWISE SPECIFIED:

1. MATERIAL: 6061-T6 ALUMIUM
2. LIGHT BEADBLAST EXTERIOR SURFACES ONLY (MATTE FINISH); MASK INTERNAL FEATURES TO ENSURE TOLERANCES ARE HELD.
3. FINISH: ANOPLATE ANOBLACK EC PROCESS. ALTERNATE BLACK ANODIZATION PROCESSES ARE NOT CONSIDERED EQUIVALENT.
- [4] INSPECT THREAD WITH MATING PART 2513390.



© COPYRIGHT 2013 TEXAS INSTRUMENTS
UNPUBLISHED, ALL RIGHTS RESERVED

DWG NO 25133368		SHEET 1	1
REVISIONS			
REV	DESCRIPTION	DATE	BY
A	ECO #2136196 - INITIAL RELEASE	9/20/13	



UNLESS OTHERWISE SPECIFIED

- DIMENSIONS ARE IN MILLIMETERS
- TOLERANCES: ANGLES $\pm 1^\circ$
2 PLACE DECIMALS ± 0.25
1 PLACE DECIMALS ± 0.50
- DIMENSIONAL LIMITS APPLY BEFORE PROCESSES
- INTERPRET DIMENSIONS IN ACCORDANCE WITH ASME Y14.5M-1994
- REMOVE ALL BURRS AND SHARP EDGES
- PARENTHEetical INFO FOR REF ONLY

DWN R ROWE	DATE 9/16/2013
Engr	
CQE/QA	
CM	
Apprvd	



HOUSING L1

SIZE B	DWG NO 25133368	REV A
SCALE 2:1		SHEET 1 OF 2

D

C

B

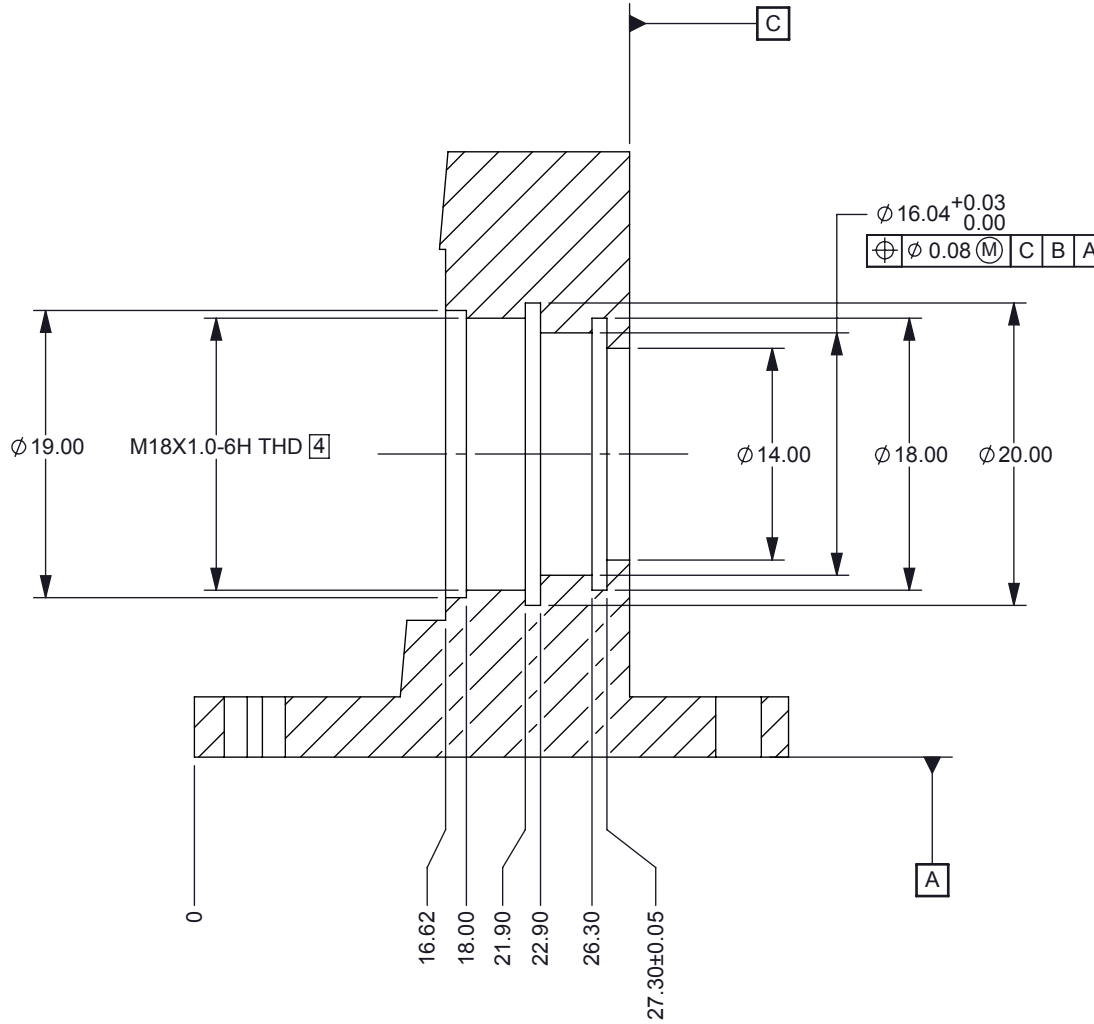
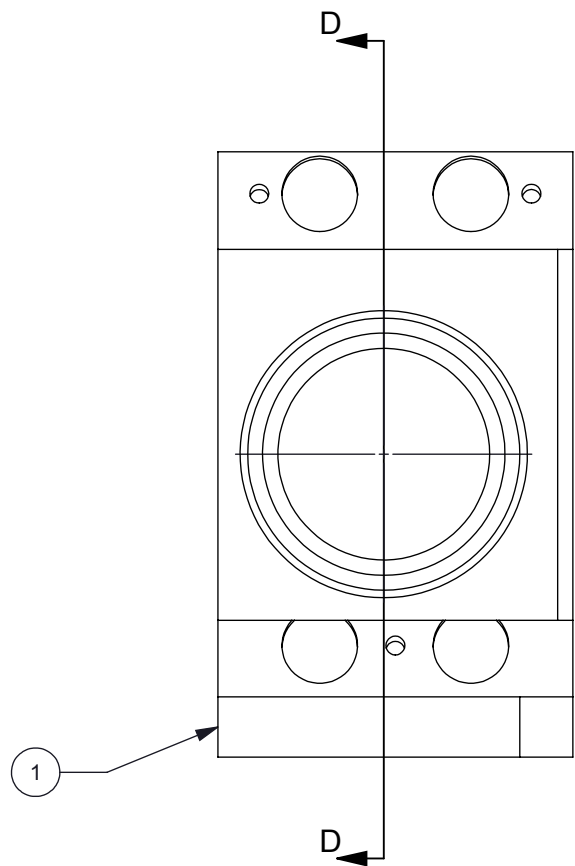
A

D

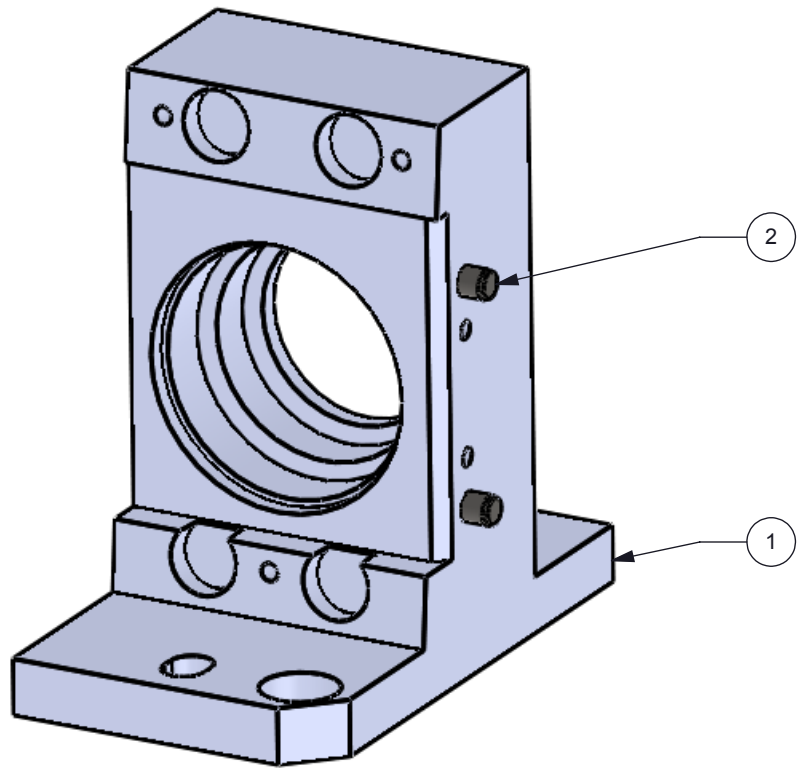
C

B

A



SECTION D-D



2	2	DOWEL PIN 2MM DIA X 6MM LG	DOWEL PIN 2MM DIA X 6MM LG	
1	1	2513368	HOUSING L1	
QTY	ITEM	PART NUMBER	DESCRIPTION	Notes

Part List		DWN R ROWE	DATE 9/16/2013	SIZE B	DWG NO 2513368	REV B
		SCALE 2:1		SHEET 2 OF 2		